

Gebwell G-Energy® accumulator tanks

– for heating optimisation

In water-circulating heating systems, the heat generated by the heating device is stored in energy accumulators to be used for the heating of the building and domestic water. The Gebwell G-Energy energy accumulator is a Finnish product, manufactured by experts of the heating sector at the Leppävirta factory.

Our generous product range offers models to be used with different heating methods. The G-Energy energy accumulator enables the parallel use of different heating systems. Our accumulators can be connected to underfloor or radiator heating systems. G-Energy accumulators are available for both single-family houses and large properties. Our range of models includes accumulators with 501L, 1000L, 2000L, 3000L, 4000L and 5000L capacities. Some of our accumulator models, the G-Energy Coil hot water heater and some of our buffer tanks are available in 750-litre capacity.

Easy to handle and install

Thanks to the steelframe on the bottom of the accumulator, the Gebwell accumulator is easy to transport, haul and install, regardless of model or size. The accumulators have detachable insulation, which makes it easy to carry them to confined spaces without needing to remove doorframes. Depending on the size of the accumulator, the detachable insulation comes in 3- 5 loose segments. For example, the 1000L accumulator has a diameter of 850mm without insulation. The insulation segments are attached to each other with quick latches, which makes it easy to remove or install them.

The accumulator's connections do not reside inside the insulation; to facilitate pipe installations, the connections extend to the insulation surface level. Levelling feet (adjustment tolerance 0-60 mm) allow the accumulator to be easily set to stand vertically even on an uneven surface.

High quality and long life-cycle

The Gebwell factory in Leppävirta employs strict quality controls. Robot welding ensures first-grade welding and even quality. The tanks are made out of steel, primed, and pressure tested using water. In addition, accumulators are available in stainless or acid-resistant steel for, among other things, cooling and domestic water applications. The insulation material in the accumulators is die-cast polyurethane, which has extremely good thermal insulation capacity and minimal thermal loss.

Shape wise, Gebwell's vertical cylindrical accumulator provides the best thermal option. Ease of use has also been taken into consideration in the design of connections. The drain connection located at the front of the accumulator makes it easy to drain the accumulator.

Die-cast urethane is used for insulation in accumulators, and the surface plate of the insulation segments is a painted steel plate covered with a protective membrane.

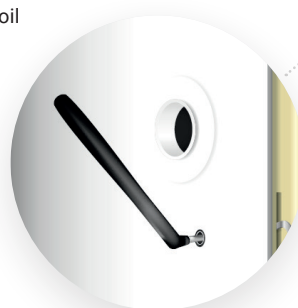
Sufficient fresh water

Using an energy accumulator is an ecological and economic way to produce a comfortable, even room temperature and sufficient hot water. The hot water accumulator stores and distributes the heat produced by heating systems, which is then used to heat the property and domestic hot water. In Gebwell accumulators, domestic water is heated in a copper coil, which offers a quick turnover of water. The coil distributes water in an energy-efficient manner ensuring freshness. Coils are ordered separately for accumulators with the exception of G-Energy Coil hot water heater, which comes with coils ready installed.

Lowerable accumulators

The steel base on the base of our cylindrical 501, 750 and 1000-litre accumulators has two parts; the lower section can be removed before installation. When lowered, the height of the 501-litre accumulator is 90 mm, the 750-litre accumulator 130 mm and the 1000-litre accumulator 150 mm lower compared to the standard.

Adjustment legs (adjustment tolerance 0–60 mm) allow the accumulator to be easily set to stand vertically even on an uneven surface.



The suitability of accumulators for different heating systems



Wood



Oil



Pellet



Solar



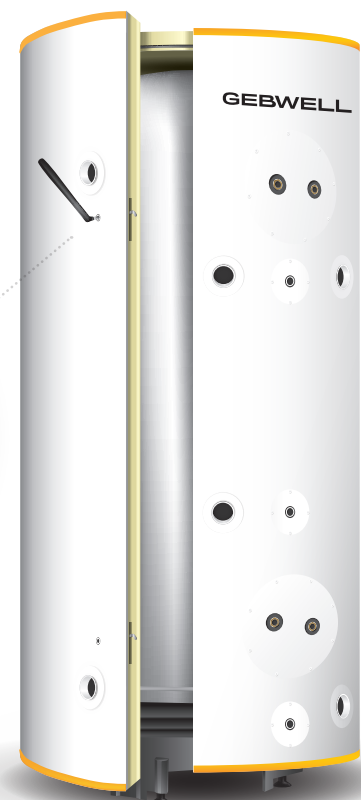
Geothermal heat



Cooling



Detachable insulation



G-Energy 300 Buffer Tank

G-Energy 300 buffer tank is a module-sized 275 L buffer tank.

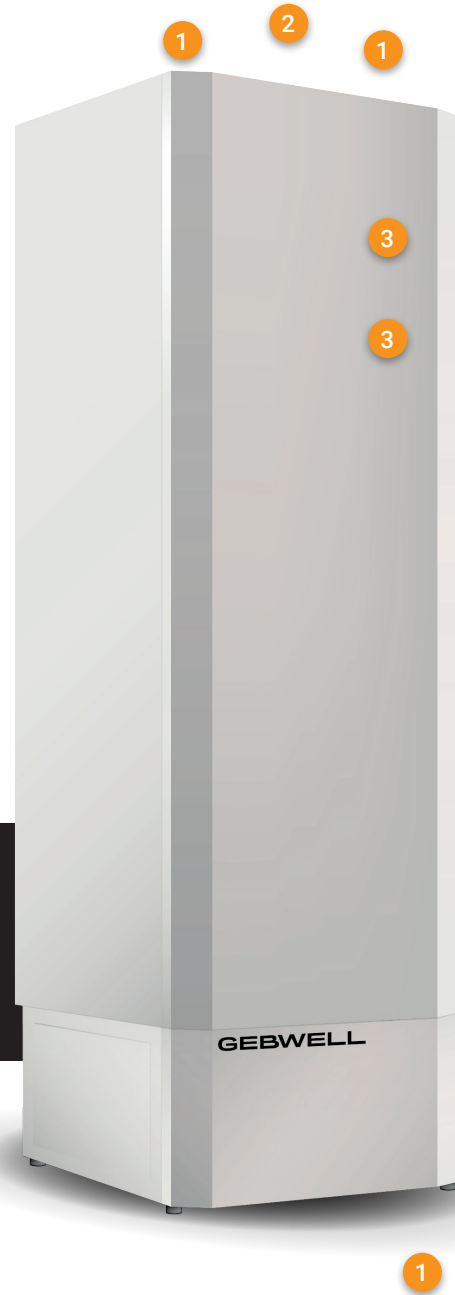
Buffer tanks even out the starting intervals of heating equipment and so improve the equipment's durability, e.g., a buffer tank can reduce the number of times a heat pump's compressors need to be started.

The accumulator tank is made out of stainless steel, and the surface plate is a powder coated steel plate. The insulation used in the water heater consists of 100 mm thick die-cast CFC-free polyurethane.

The polyurethane fills the space between the surface plates and the water tank completely, which gives it an extremely good thermal insulation capacity. This means that the energy efficiency of the equipment is first-rate.

The die-cast polyurethane also acts as the accumulator's frame, making it sturdy. The levelling feet on the base make installation easy.

The SV model has two electric immersion heater connections that can accommodate a 10 kilowatt electrical immersion heater at maximum. Electric immersion heaters are ordered separately.



Tank connections and connection sizes

1. Charging/heating, R2"
2. Measurement, Ø 10mm
3. Electric immersion heater, R2" (300 SV)



Model		Buffer Tank 300	Buffer Tank 300 SV
GTIN		6415853623889	6415853626255
Tank capacity	L	275	275
Height	mm*	1890	1890
Width	mm	595	595
Depth	mm	595	595
Tilt measurement	mm	2000	2000
Weight	kg	90	90
Connection sizes, #1		2"	2"
Number of electric immersion heater connections	pc	0	2
Max electric immersion heater size	kW	-	10
Max temperature	°C	110	110
Max operating pressure	bar	10	10

* + Levelling feet 0-60 mm

G-Energy Buffer Tank

G-Energy buffer tanks can be used to increase the water capacity of a heating system.

A higher capacity ensures a steady and sufficient flow and improves the operation and efficiency of the heat pump. A greater water capacity also extends the duty cycles and, simultaneously, the life cycle of the compressor.

G-Energy buffer tanks are available as 501L, 750L and 1000L models, with DN50 and DN65 connections and 3 or 6 bar pressure classes.

The accumulator tank is made out of steel, primed, and pressure tested. The insulation is made out of die-cast closed-cell polyurethane, which has extremely good thermal insulation capacity and minimal thermal loss. As standard, the insulation is made out of detachable segments, which are easy to detach and reattach. The outer surface of the insulation segments is made out of painted steel plate with a protective coating.

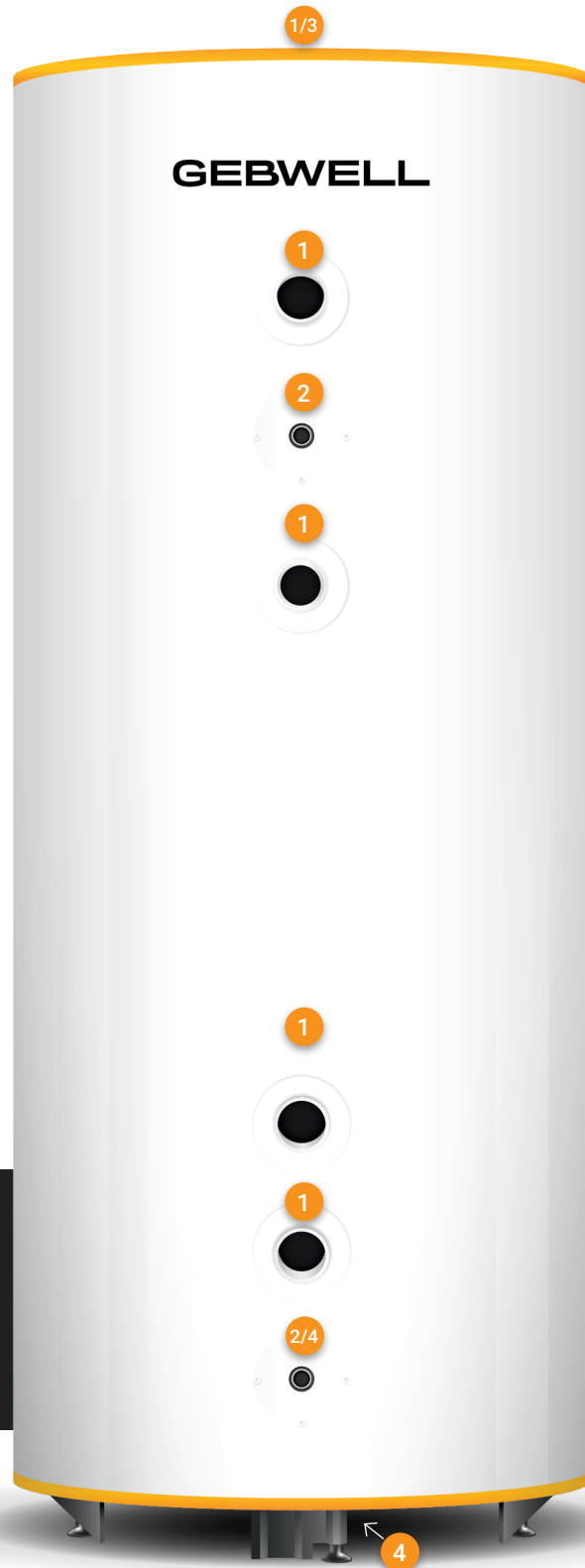
The steel base on the base of the accumulator makes hauling easier. The base has two parts; the lower section can be removed before installation. When lowered, the height of the 501-litre accumulator is 90 mm, the 750-litre accumulator 130 mm and the 1000-litre accumulator 150 mm lower compared to the standard.

The accumulator has levelling feet with a 60 mm adjustment tolerance that makes it easy to set the accumulator to stand vertically.



Tank connections and connection sizes

1. Charging/heating, R2" / DN65
2. Measurement, R1/2" the lowermost in front R1" (2/4)
3. Venting, R2"
4. Drainage, R1"



G-Energy buffer tank 501 L

Model		Buffer Tank 501L 3 bar DN50	Buffer Tank 501L 3 bar DN65	Buffer Tank 501L 6 bar DN50	Buffer Tank 501L 6 bar DN65
GTIN (64158...)		53623896	53623902	53623919	53623926
Tank capacity	L	501	501	501	501
Height	mm*	2030	2030	2030	2030
Height when lowered	mm*	1940	1940	1940	1940
Diameter	mm**	600 / 780	600 / 780	600 / 780	600 / 780
Tilt measurement	mm***	2100	2100	2100	2100
Weight	kg	180	180	180	180
Connection sizes, #1		2"	DN65	2"	DN65
Max temperature	°C	110	110	110	110
Max operating pressure	bar	3	3	6	6



* +Levelling feet 0-60mm

** Measurements: insulation removed/installed (insulation thickness 90mm)

*** Tilt measurement with insulation detached

G-Energy buffer tank 750 L

Model		Buffer Tank 750L 3 bar DN50	Buffer Tank 750L 3 bar DN65	Buffer Tank 750L 6 bar DN50	Buffer Tank 750L 6 bar DN65
GTIN		6430079400144	6430079400151	6430079400168	6430079400175
Tank capacity	L	750	750	750	750
Height	mm*	2100	2100	2100	2100
Height when lowered	mm*	1970	1970	1970	1970
Diameter	mm**	750 / 930	750 / 930	750 / 930	750 / 930
Tilt measurement	mm***	2100	2100	2100	2100
Weight	kg	200	200	200	200
Connection sizes, #1		2"	DN65	2"	DN65
Max temperature	°C	110	110	110	110
Max operating pressure	bar	3	3	6	6

* +Levelling feet 0-60mm

** Measurements: insulation removed/installed (insulation thickness 90mm)

*** Tilt measurement with insulation detached

G-Energy buffer tank 1000 L

Model		Buffer Tank 1000L 3 bar DN50	Buffer Tank 1000L 3 bar DN65	Buffer Tank 1000L 3 bar DN80	Buffer Tank 1000L 6 bar DN50	Buffer Tank 1000L 6 bar DN65	Buffer Tank 1000L 6 bar DN80
GTIN (64158...)		53623940	53623957	53626521	53623964	53623971	53626538
Tank capacity	L	1000	1000	1000	1000	1000	1000
Height	mm*	2150	2150	2150	2150	2150	2150
Height		2000	2000	2000	2000	2000	2000
Diameter	mm**	850 / 1030	850 / 1030	850 / 1030	850 / 1030	850 / 1030	850 / 1030
Tilt measurement	mm***	2200	2200	2200	2200	2200	2200
Weight	kg	260	260	260	260	260	260
Connection sizes, #1		2"	DN65	DN80	2"	DN65	DN80
Max temperature	°C	110	110	110	110	110	110
Max operating pressure	bar	3	3	3	6	6	6

* +Levelling feet 0-60mm

** Measurements: insulation removed/installed (insulation thickness 90mm)

*** Tilt measurement with insulation detached

G-Energy SV Buffer Tank

A buffer tank with three connections for electric immersion heaters. The 501-litre models are equipped with three connections for electric immersion heaters, the 750-litre model with three or six connections and 1,000-litre models come with three, six or eight electric immersion heater connections. Electric immersion heaters are ordered separately.

According to need, the tank is equipped with electric immersion heaters to ensure sufficient heating and domestic hot water. Equipping the tank with electric immersion heaters enables, for instance, a wood-heated house to be heated with electricity during a holiday trip.

The accumulator tank is made out of steel, primed, and pressure tested. The insulation is made out of die-cast closed-cell polyurethane, which has extremely good thermal insulation capacity and minimal thermal loss. As standard, the insulation is made out of detachable segments, which are easy to detach and reattach. The outer surface of the insulation segments is made out of painted steel plate with a protective coating.

The steel base on the base of the accumulator makes hauling easier. The base has two parts; the lower section can be removed before installation. When lowered, the height of the 501-litre accumulator is 90 mm, the 750-litre accumulator 130 mm and the 1000-litre accumulator 150 mm lower compared to the standard.

The accumulator has levelling feet with a 60 mm adjustment tolerance that makes it easy to set the accumulator to stand vertically.



Tank connections and connection sizes

1. Charging/heating, R2"
2. Measurement, R1/2"
the lowermost on side R1" (2/4)
3. Venting, R2"
4. Drainage, R1"
5. Electric immersion heater, R2"

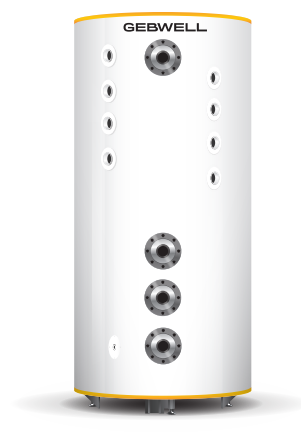




G-Energy Buffer Tank
501 L 3SV



G-Energy Buffertank SV 1000
L 6SV



G-Energy Buffertank SV 1000
L 8SV DN65

G-Energy SV buffer tank 501 and 750 L

Model		SV Buffer Tank 501 L	SV Buffer Tank 750 L 3 bar 3SV	SV Buffer Tank 750 L 3 bar 6SV	SV Buffer Tank 750 L 6 bar 3SV	SV Buffer Tank 750 L 6 bar 6SV
GTIN		6415853623933	6430079400199	6430079400182	6430079400212	6430079400205
Tank capacity	L	501	750	750	750	750
Height	mm*	2030	2100	2100	2100	2100
Height when lowered	mm*	1940	1970	1970	1970	1970
Diameter	mm**	600 / 780	750 / 930	750 / 930	750 / 930	750 / 930
Tilt measurement	mm***	2100	2100	2100	2100	2100
Weight	kg	180	200	200	230	230
Connection sizes, #1		2"	2"	2"	2"	2"
Number of el. immersion heater connections	pc	3	3	6	3	6
Max electric immersion heater capacity	kW		12	12	12	12
Max temperature	°C	110	110	110	110	110
Max operating pressure	bar	3	3	3	6	6

* +Levelling feet 0-60mm ** Measurements: insulation removed/installed (insulation thickness 90mm) *** Tilt measurement with insulation detached

G-Energy SV buffer tank 1000 L

Model		SV Buffer Tank 1000 L	SV Buffer Tank 1000 L 3 bar 6SV	SV Buffer Tank 1000 L 6 bar 6SV	SV Buffer Tank 1000 L 6 bar 8SV DN65
GTIN		6415853626026	6415853626262	6415853626286	6415853626705
Tank capacity	L	1000	1000	1000	1000
Height	mm*	2150	2150	2150	2150
Height	mm*	2000	2000	2000	2000
Diameter	mm**	850 / 1030	850 / 1030	850 / 1030	850 / 1030
Tilt measurement	mm***	2200	2200	2200	2200
Weight	kg	260	260	260	260
Connection sizes, #1		2"	2"	2"	DN65
Number of el. immersion heater connections	pc	3	6	6	8
Max electric immersion heater capacity	kW	12	12	12	12
Max temperature	°C	110	110	110	110
Max operating pressure	bar	3	3	6	6

* +Levelling feet 0-60mm ** Measurements: insulation removed/installed (insulation thickness 90mm) *** Tilt measurement with insulation detached

G-Energy PW Buffer Tank

G-Energy PW buffer tanks are suitable for domestic water preheating and heating system buffer tanks.

Buffer tanks reduce the number of start-up times of heating equipment, such as heat pump compressors. In properties with a heat pump, the preheating of domestic water enables the domestic hot water to be heated more energy efficiently and improves the sufficiency of domestic hot water. The G-Energy PW buffer tank includes two flanges domestic hot water preheating coils. The 501 and 750 -litre G-Energy PW buffer tanks are equipped with three connections for electric immersion heaters, and the 1,000-litre models come with three or six electric immersion heater connections. The coils and electric immersion heaters are to be ordered separately.

The accumulator tank is made out of steel, primed, and pressure tested. The accumulator insulation is made out of die-cast closed-cell polyurethane, which has extremely good thermal insulation capacity and minimal thermal loss. As standard, the insulation is made out of detachable segments, which are easy to detach and reattach. The outer surface of the insulation segments is made out of painted steel plate with a protective coating.

The steel base on the base of the accumulator makes hauling easier. The base has two parts; the lower section can be removed before installation. When lowered, the height of the 501-litre accumulator is 90 mm, the 750-litre accumulator 130 mm and the 1000-litre accumulator 150 mm lower compared to the standard.

The accumulator has levelling feet with a 60 mm adjustment tolerance that makes it easy to set the accumulator to stand vertically.



Accumulator connections and connection sizes

1. Charging/heating, R2"
2. Measurement, R1/2" the lowermost on side R1" (2/4)
3. Venting, R2"
4. Drainage, R1"
5. Electric immersion heater, R2"
6. Coil flange, Ø 200mm



G-Energy PW Buffer tank 501 and 750 L

Model		PW Buffer Tank 501L 3 BAR 3SV	PW Buffer Tank 501L 6 BAR 3SV
GTIN		6415853623841	6415853623858
Tank capacity	L	501	501
Height	mm*	2030	2030
Height when lowered	mm*	1940	1940
Diameter	mm**	600 / 780	600 / 780
Tilt measurement	mm***	2100	2100
Weight	kg	200	200
Connection sizes, #1		2"	2"
Max coil size		LK55, bent	LK55, bent
Number of electric imm. heater connections	pc	3	3
Max electric immersion heater capacity	kW	12	12
Max temperature	°C	110	110
Max operating pressure	bar	3	6

* +Levelling feet 0-60mm

** Measurements: insulation removed/installed (insulation thickness 90mm)

*** Tilt measurement with insulation detached

G-Energy PW Buffer tank 750 L

Model		PW Buffer Tank 750L 3 BAR 3 SV	PW Buffer Tank 750L 6 BAR 3 SV
GTIN		6430079400045	6430079400052
Tank capacity	L	750	750
Height	mm*	2100	2100
Height when lowered	mm*	1970	1970
Diameter	mm**	750 / 930	750 / 930
Tilt measurement	mm***	2100	2100
Weight	kg	200	230
Connection sizes, #1		2"	2"
Max coil size		LK55, bent	LK55, bent
Number of electric imm. heater connections	pc	3	3
Max electric immersion heater capacity	kW	12	12
Max temperature	°C	110	110
Max operating pressure	bar	3	6

* +Levelling feet 0-60mm

** Measurements: insulation removed/installed (insulation thickness 90mm)

*** Tilt measurement with insulation detached

G-Energy PW Buffer Tank 1000 L

Model		PW Buffer Tank 1000L 3 BAR 3 SV	PW Buffer Tank 1000L 3 BAR 6 SV	PW Buffer Tank 1000L 6 BAR 3 SV	PW Buffer Tank 1000L 6 BAR 6 SV
GTIN		6415853623865	6415853626316	6415853623872	6415853626330
Tank capacity	L	1000	1000	1000	1000
Height	mm*	2150	2150	2150	2150
Height when lowered	mm*	2000	2000	2000	2000
Diameter	mm**	850 / 1030	850 / 1030	850 / 1030	850 / 1030
Tilt measurement	mm***	2200	2200	2200	2200
Weight	kg	280	280	280	280
Connection sizes, #1		2"	2"	2"	2"
Max coil size		LK55	LK55	LK55	LK55
Number of electric imm. heater connections	pc	3	6	3	6
Max electric immersion heater capacity	kW	12	12	12	12
Max temperature	°C	110	110	110	110
Max operating pressure	bar	3	3	6	6

* +Levelling feet 0-60mm

** Measurements: insulation removed/installed (insulation thickness 90mm)

*** Tilt measurement with insulation detached

G-Energy Coil Water Heater

Equipped with coils, G-Energy Coil is suitable for heating domestic hot water together with a heat pump.

The G-Energy Coil water heater is available in 501, 750 and 1000 liter models in 3 and 6 bar pressure classes. Depending on the size, the water heater includes one to four 25-metre-long coils. The 501L model is equipped with 1-2 coils. The 750L and the 1000L models are equipped with 1-4 coils. The domestic hot water is heated in coils with maximum pressure of 10 bar.

The 501 and 1000L models come with two connections for electric immersion heaters and the 750L model with three connections. The electric immersion heaters are ordered separately.

The accumulator tank is made out of steel, primed, and pressure tested. The insulation of 501 and 1000-liter is made out of die-cast closed-cell polyurethane, which has extremely good thermal insulation capacity and minimal thermal loss. As standard, the insulation is made out of detachable segments, which are easy to detach and reattach. The outer surface of the insulation segments is made out of painted steel plate with a protective coating. The insulation in 750-litre SV buffer tank is made of polyester fibre, and the insulation has PVC coating. The removable insulation can be removed by opening the zipper.

The steel base on the base of the accumulator makes hauling easier. The base has two parts; the lower section can be removed before installation. When lowered, the height of the 501-litre accumulator is 90 mm, the 750-litre accumulator 130 mm and the 1000-litre accumulator 150 mm lower compared to the standard.

The accumulator has levelling feet with a 60 mm adjustment tolerance that makes it easy to set the accumulator to stand vertically.



Tank connections and connection sizes

1. Coil, Cu22
2. Charging, R2"
3. Venting, R1"
4. Electric immersion heater, R2"
5. Drainage, R1"
6. Measurement, R1/2"
the lowermost in front R1" (5/6)



G-Energy Coil Water Heater 501 L

Model		Coil 501 1x25 3 BAR	Coil 501 1x25 6 BAR	Coil 501 2x25 3 BAR	Coil 501 2x25 6 BAR
GTIN		6415852380554	6415852380578	6415852380561	6415852380585
Tank capacity	L	501	501	501	501
Height	mm*	2030	2030	2030	2030
Height when lowered	mm*	1940	1940	1940	1940
Diameter	mm**	600 / 780	600 / 780	600 / 780	600 / 780
Tilt measurement	mm***	2100	2100	2100	2100
Weight	kg	205	205	225	225
Connection sizes, #2		2"	2"	2"	2"
Number of coils	pc	1	1	2	2
Recommended flow in coils	l/s	0.35	0.35	0.7	0.7
Number of heater connections	pc	2	2	2	2
Max electric immersion heater capacity	kW	12	12	12	12
Max temperature	°C	110	110	110	110
Max oper. pressure	bar	3	6	3	6

* +Levelling feet 0-60mm ** Measurements: insulation removed/installed (insulation thickness 90mm) *** Tilt measurement with insulation detached

G-Energy Coil Water Heater 750 L

Model		Coil 750 1x25 3 BAR	Coil 750 1x25 6 BAR	Coil 750 2x25 3 BAR	Coil 750 2x25 6 BAR	Coil 750 3x25 3 BAR	Coil 750 3x25 6 BAR	Coil 750 4x25 3 BAR	Coil 750 4x25 6 BAR
GTIN number (64033079..)		400069	400076	400083	400090	400106	400113	400120	400137
Tank capacity	L	750	750	750	750	750	750	750	750
Height	mm*	2100	2100	2100	2100	2100	2100	2100	2100
Height when lowered	mm*	1970	1970	1970	1970	1970	1970	1970	1970
Diameter	mm**	750 / 930	750 / 930	750 / 930	750 / 930	750 / 930	750 / 930	750 / 930	750 / 930
Tilt measurement	mm***	2100	2100	2100	2100	2100	2100	2100	2100
Weight	kg	225	255	250	280	275	305	300	330
Connection sizes, #2		2"	2"	2"	2"	2"	2"	2"	2"
Number of coils	pc	1	1	2	2	3	3	4	4
Recommended flow in coils	l/s	0.35	0.35	0.7	0.7	1.05	1.05	1.4	1.4
Number of electric immersion heater connections	pc	3	3	3	3	3	3	3	3
Maximum electric immersion heater capacity	kW	12	12	12	12	12	12	12	12
Max temperature	°C	110	110	110	110	110	110	110	110
Max operating pressure	bar	3	6	3	6	3	6	3	6

* +Levelling feet 0-60mm

** Measurements: insulation removed/installed (insulation thickness 90mm)

*** Tilt measurement with insulation detached

G-Energy Coil Water Heater 1000 L

Model		Coil 1000 1x25 3 BAR	Coil 1000 1x25 6 BAR	Coil 1000 2x25 3 BAR	Coil 1000 2x25 6 BAR	Coil 1000 3x25 3 BAR	Coil 1000 3x25 6 BAR	Coil 1000 4x25 3 BAR	Coil 1000 4x25 6 BAR
GTIN (64158..)		52380776	52380783	52380592	52380622	52380608	52380639	52380615	52380646
Tank capacity	L	1000	1000	1000	1000	1000	1000	1000	1000
Height	mm*	2150	2150	2150	2150	2150	2150	2150	2150
Height when lowered	mm*	2000	2000	2000	2000	2000	2000	2000	2000
Diameter	mm**	850 / 1030	850 / 1030	850 / 1030	850 / 1030	850 / 1030	850 / 1030	850 / 1030	850 / 1030
Tilt measurement :	mm***	2200	2200	2200	2200	2200	2200	2200	2200
Weight	kg	295	295	305	305	330	330	350	350
Connection sizes, #2		2"	2"	2"	2"	2"	2"	2"	2"
Number of coils	pc	1	1	2	2	3	3	4	4
Recommended flow in coils	l/s	0.35	0.35	0.7	0.7	1.05	1.05	1.4	1.4
Number of electric immersion heater connections	pc	2	2	2	2	2	2	2	2
Maximum electric immersion heater capacity	kW	12	12	12	12	12	12	12	12
Max temperature	°C	110	110	110	110	110	110	110	110
Max oper. pressure	bar	3	6	3	6	3	6	3	6

* +Levelling feet 0-60mm

** Measurements: insulation removed/installed (insulation thickness 90mm)

*** Tilt measurement with insulation detached

G-Energy Cooling Buffer Tank

G-Energy Cooling is a buffer tank designed for cooling systems.

G-Energy Cooling can be used as a buffer tank for, e.g., water coolers and other mechanical cooling systems. Buffer tanks even out the conditions between the start-up times of cooling equipment and reduce the number of times compressors need to be started.

The G-Energy Cooling buffer tank is available as 501L, 1000L and 2000L models and in 3 or 6 bar pressure classes.

G-Energy Cooling is available with either a surface-treated steel or a stainless steel tank. The accumulator tanks are pressure-tested at the factory. A buffer tank has a 19mm cellular rubber insulation.

The steel base on the base of the accumulator makes hauling easier. The base on 501 and 1000 liter tanks has two parts; the lower section can be removed before installation. When lowered, the height of the 501 L accumulator tank is 90 mm, and the 1000 L accumulator tank 150 mm lower compared to the standard.

The accumulator has levelling feet with a 60 mm adjustment tolerance that makes it easy to set the accumulator to stand vertically.



Tank connections and connection sizes

1. Charging/cooling, DN80/100
2. Venting, R1"
3. Drainage, R1"
4. Measurement, R1/2" the lowermost in front R1" (3/4)



G-Energy Cooling Buffer Tank

Model		Cooling 501 3 BAR	Cooling 501 6 BAR	Cooling 1000 3 BAR	Cooling 1000 6 BAR	Cooling 2000 3 BAR	Cooling 2000 6 BAR
GTIN (64158...)		52380714	52380721	52380738	52380745	52380752	52380769
Tank capacity	L	501	501	1000	1000	2000	2000
Height	mm*	2010	2010	2130	2130	2200	2200
Height when lowered	mm*	1920	1920	1980	1980		
Diameter	mm	640	640	890	890	1240	1240
Tilt measurement	mm	2100	2100	2200	2200	2300	2300
Weight	kg	180	180	260	260	400	400
Connection sizes #1	DN	DN80	DN80	DN80	DN80	DN80	DN80
Material		steel	steel	steel	steel	steel	steel
Max temperature	°C	110	110	110	110	110	110
Max operating pressure	bar	3	6	3	6	3	6

* +Levelling feet 0-60 mm

G-Energy Cooling RST Buffer Tank

Model		Cooling RST 501 3 BAR	Cooling RST 501 6 BAR	Cooling RST 1000 3 BAR	Cooling RST 1000 6 BAR	Cooling RST 2000 3 BAR	Cooling RST 2000 6 BAR
GTIN (64300...)		79400441	79400458	79400465	79400472	79400489	79400496
Tank capacity	L	501	501	1000	1000	2000	2000
Height	mm*	2010	2010	2130	2130	2200	2200
Height when lowered	mm*	1920	1920	1980	1980		
Diameter	mm	640	640	890	890	1240	1240
Tilt measurement	mm	2100	2100	2200	2200	2300	2300
Weight	kg	180	180	260	260	400	400
Connection sizes #1	DN	DN80	DN80	DN100	DN100	DN100	DN100
Material		stainless steel	stainless steel	stainless steel	stainless steel	stainless steel	stainless steel
Max temperature	°C	110	110	110	110	110	110
Max operating pressure	bar	3	6	3	6	3	6

* +Levelling feet 0-60 mm

G-Energy EV energy accumulator

G-Energy EV is an accumulator that can be used with, e.g., wood, pellet, oil along other water-circulating heating systems.

The accumulator has four heater connections that can be equipped with electric immersion heaters, which will take care of heating water in case the heating system switches off or a fault occurs.

The G-Energy EV accumulator has two coil flanges: the upper flange enables the installation of a domestic hot water coil, and the lower one the installation of a domestic water preheating coil or, for instance, a solar power or other charging coil. The lower charging connections of the accumulator include guide pipes to generate the right kind of heat layering. Coils are to be ordered separately.

The G-Energy EV accumulator comes with a 501L, 1000L, 2000L, 3000L, 4000L or 5000L capacity.

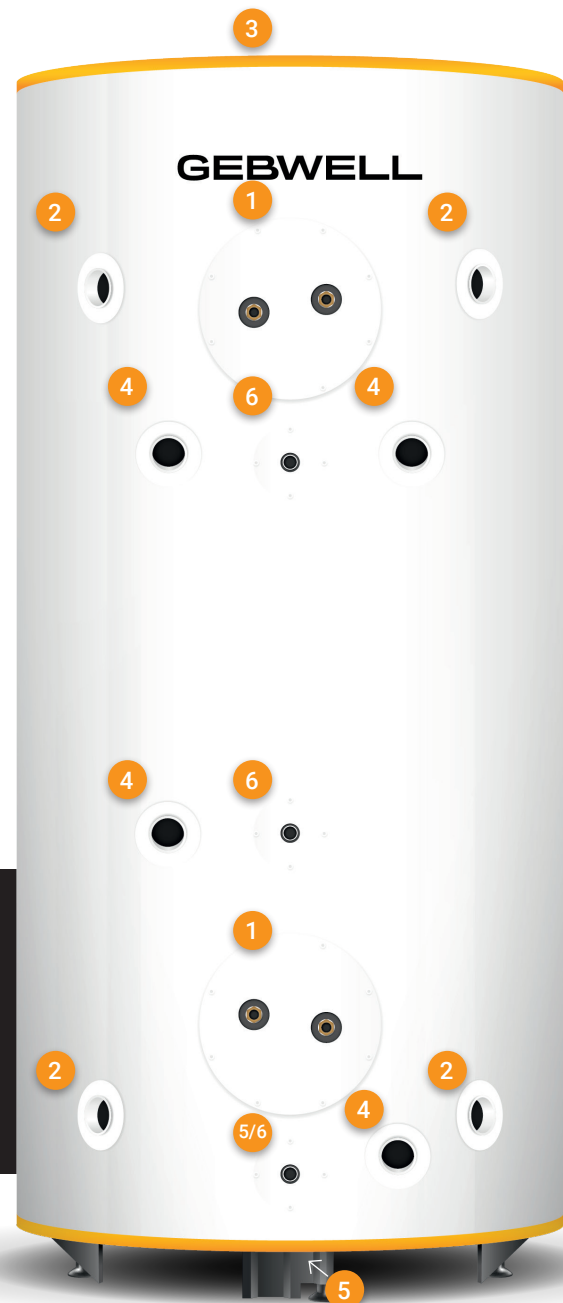
The accumulator tank is made out of steel, primed, and pressure tested. The accumulator insulation is made out of die-cast closed-cell polyurethane, which has extremely good thermal insulation capacity and minimal thermal loss. As standard, the insulation is made out of detachable segments, which are easy to detach and reattach. The outer surface of the insulation segments is made out of painted steel plate with a protective coating.

The steel base on the base of the accumulator makes hauling easier. The base on 501 and 1000 liter tanks has two parts; the lower section can be removed before installation. When lowered, the height of the 501-litre accumulator is 90 mm, the 750-litre accumulator 130 mm and the 1000-litre accumulator 150 mm lower compared to the standard.

The accumulator has levelling feet with a 60 mm adjustment tolerance that makes it easy to set the accumulator to stand vertically.

Accumulator connections and connection sizes

1. Coil flange, Ø 200mm
2. Charging/heating, R2"
3. Venting, R1"
4. Electric immersion heater, R2"
5. Drainage, R1"
6. Measurement, R1/2" the lowermost in front R1" (5/6)



Model		G-Energy EV 501	G-Energy EV 1000	G-Energy EV 2000	G-Energy EV 3000	G-Energy EV 4000	G-Energy EV 5000
GTIN (64158...)	standard	52380271	52380288	52380295	52380301	52380318	52380325
Tank capacity	L	501	1000	2000	3000	4000	5000
Height	mm*	2030	2150	2250	2400	2450	2550
Height when lowered	mm*	1940	2000				
Diameter	mm**	600 / 780	850 / 1030	1200 / 1380	1400 / 1580	1600 / 1780	1800 / 1980
Tilt measurement	mm***	2100	2200	2300	2450	2600	2700
Weight	kg	180	260	400	470	620	690
Connection sizes, #2		2"	2"	2"	2"	2"	2"
Max coil size		LK55, bent	LK55	LK90	LK90	LK90	LK90
Number of electric immersion heater connections	pc	4	4	4	4	4	4
Max heater capacity	kW	12	12	12	12	12	12
Max temperature	°C	110	110	110	110	110	110
Max operating pressure	bar	3	3	3	3	3	3

* +Levelling feet 0-60mm ** Measurements: insulation removed/installed (insulation thickness 90mm) *** Tilt measurement with insulation detached

Gebwell KVL300 hot water heater

Gebwell KVL300, modular hot water heater is designed for producing and storing domestic hot water for detached, row and vacation houses. The hot water heater produces enough hot water for the entire family. The advanced insulation solutions result in substantial additional savings and reduce environmental impact.

Gebwell thermal storage tanks have been designed, manufactured and tested in Finland. When designing the storage tanks, attention has been paid to allow easy installation and servicing. The storage tanks have been manufactured using high-quality components and operational reliability and usability are top class.

Gebwell KL300 is a vertical, free-standing unit. The installation is made easier using levelling feet on the base.

Tank of the hot water heater is made of special stainless steel. The maximum service pressure of the tank is 1.0 MPa (10 bar). Exterior is made of white powder-painted steel sheet metal. Other colour options are available upon special order.

Insulation in the hot water heater is pressure-moulded, freon-free polyurethane. The urethane fills the entire space between the exterior sheeting and the water tank, which results in excellent thermal insulation properties and top-notch energy-efficiency. Pressure-moulded polyurethane also acts as the frame of the storage tank and makes it sturdy.

The heating element in the KVL300 is an Incoloy Electric immersion heater which can be used with either 1- or 3-phase connection.

The KVL300 hot water heater is equipped with continuous heating temperature control, a maximum temperature limiter (thermostat and overheating protection) and an on-off switch.

Gebwell KVL300 hybrid

Gebwell KVL300 hybrid is a hot water heater equipped with a heating coil specially designed for heat pumps, but it may also be used with other sources of heat such as oil or wood boilers and even with solar heating systems. Using a coil to heat the water means that the hot water can be pumped out more quickly.

Installation

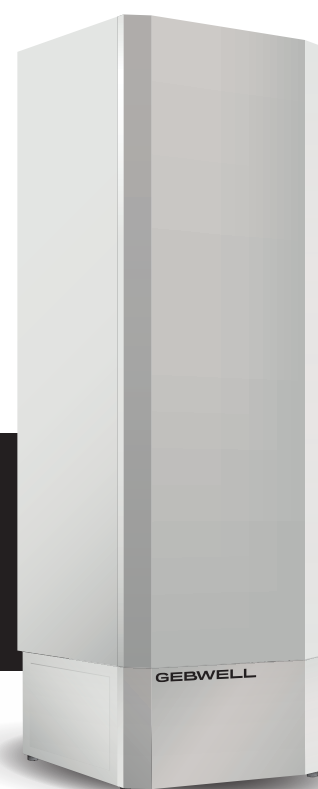
In the back of the hot water heater, there is room on both sides of the tank for pipe installations directing either up or to the side.

The hot water heater has a mixture valve and a set of safety valves (thermostat valve, shut-off/check valve, safety/drainage valve) for water connections. The set of safety valves include a safety valve that opens at 1.0 MPa (10 bar).

Warranty

Gebwell hot water tanks have a two-year warranty against defects in materials and manufacturing defects.

Manufactured in Finland
Energy saving
Noiseless
Continuous heating temperature control
Easy installation



	Gebwell KVL300	Gebwell KVL300 hybrid**
GTIN	6415852380523	6415852380547
Colour	White	White
Volume	275 l	275 l
Max. allowed temperature	100 °C	100 °C
Min. allowed temperature	0 °C	0 °C
Max. allowed operating pressure	1,0 MPa	1,0 MPa
Power	3 kW	3 kW
Heat loss	1,23 kWh / day	1,23 kWh / day
Heating coil	no	yes, 25m
Max. recommended heat pump capacity	-	16 kW
Energy efficiency class	C	C
Voltage	50/60 Hz 230/400 V 3P~/ 1P~	50/60 Hz 230/400 V 3P~/ 1P~
Protection class*	IPX4	IPX4
Recommended fuse size	3x6 / 1x16	3x6 / 1x16
Maximum fuse size	3x16 / 1x16	3x16 / 1x16
Dimensions (depth, width, height)	595 x 595 x 1890 mm	595 x 595 x 1890 mm
Weight	90 kg	105 kg

* The IPX4 splash proof IP rating is achieved by installing the accumulator on a solid floor next to a wall.

** pat.pend. PCT/FI2015/050941

G-Energy Custom Accumulator

A special accumulator for installations not suitable for our standard models.

Equipped with flexible features, the special model is fully customisable. The customer can select the capacity, material, pressure class and insulation material of the accumulator. The size of connections and the number and placement of connections and sensor pockets can also be customised. The special accumulator is available either with or without a bulkhead.



G-Energy Custom is tailored to the property and is available with, for instance, the following features:

- Capacity - 501, 750, 1000, 2000, 3000, 4000 or 5000 litres
- Pressure class - 1.5-10 bars
- Connections - the number, size and location as required
- Tank material - FE, HST or RST (maximum temperature 40 °C)
- Insulation material - polyurethane, cellular rubber, polyester fibre or no insulation
- Bulkhead - the accumulator comes with or without a bulkhead

Model		Custom 501	Custom 750	Custom 1000	Custom 2000	Custom 3000	Custom 4000	Custom 5000
Tank capacity	L	501	750	1000	2000	3000	4000	5000
Height	mm ¹	2030	2130	2150	2250	2400	2450	2550
Diameter	mm ²	600 / 780	750 / 950	850 / 1030	1200 / 1380	1400 / 1580	1600 / 1780	1800 / 1980
Tilt measurement	mm ³	2100	2100	2200	2300	2450	2600	2700
Weight	kg	depends on the model						
Connection sizes		as desired						
Max coil size		LK55	LK55	LK90	LK140	LK180	LK180	LK180
Max number of vertical coils	pc	3 ⁴	4	5	7	8	8	10
Number of heater connections	pc	as desired						
Max heater capacity	kW	12 ⁴	12	12	12	12	12	12
Max temperature	°C	110	110	110	110	110	110	110
Max operating pressure FE ⁵	bar	6	6	6	6	6	3	3
Max operating press. stainless steel ⁵	bar	10	6	6	6	6	3	3

1 +Levelling feet 0-60mm 2 Measurements: insulation removed/installed (insulation thickness 90mm) 3 Tilt measurement with insulation detached using the height and diameter measurements above 4 With three vertical coils in 501 liter accumulator tank, the maximum heater capacity is 6 kW 5 Larger operating pressures are to be consulted case by case with Gebwell Ltd. sales

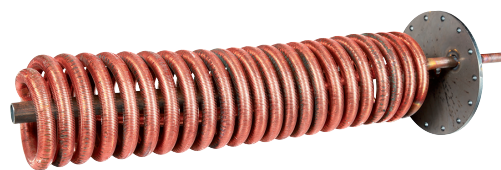
NOTE! The accumulators can be made lower within certain parameters

Domestic hot water coil

Coil for producing domestic hot water in accumulator tanks.

Producing domestic hot water in high-speed flow copper coil is energy efficient and ensures freshness of water. Structural pressure of the coil is 10 bar and material is 22 mm finned copper.

Coils are ordered on tanks separately with the exception of G-Energy Coil water heaters, which come with coils installed.



Model	GTIN number	Maximum flow l/s	Copper pipe length m	Heat transfer area m ²	Connection DN/UK	Flange diameter mm	Feasibility, tank capacity L
LK45 Coil	6415853619554	0.5	12	2,8	20	200	1000-5000
LK45 Coil, bent	6430079400427	0.5	12	2,8	20	200	501-5000
LK55 Coil	6415853619561	1.0	2 x 6	2,8	32	200	1000-5000
LK55 Coil, bent	6430079400434	1.0	2 x 6	2,8	32	200	501-5000
LK90 Coil	6415853619578	1.0	2 x 12	5,7	32	200	1000-5000

Electric immersion heater

Immersion heaters are delivered with a thermostat and a limiter.

The operation of the accumulator can be secured by equipping it with one or more electric immersion heaters, in case the heating system is switched off or malfunctions. In addition, an accumulator equipped with Electric immersion heaters can be used for heating a wood-heated house electrically during a holiday trip, for example.



12 kW electric immersion heater and limiter



2-10 kW electric immersion heater and limiter

Model	GTIN number	Capacity kW	Material	Connection	Length mm	Immersion depth mm	Cool end mm
Electric immersion heater 2 kW	6415853623070	2.0	AISI 316L	2"	254	240	95
Electric immersion heater 3 kW	6415853623087	3.0	AISI 316L	2"	269	255	95
Electric immersion heater 5 kW	6415853623094	5.0	AISI 316L	2"	399	385	95
Electric immersion heater 6 kW	6415853623100	6.0	AISI 316L	2"	399	385	95
Electric immersion heater 7.5 kW	6415853623117	7.5	AISI 316L	2"	455	441	95
Electric immersion heater 9 kW	6415853623124	9.0	AISI 316L	2"	455	441	95
Electric immersion heater 10 kW	6415853623131	10.0	AISI 316L	2"	455	441	95
Electric immersion heater 12 kW	6415853626132	12.0	AISI 316L	2"	530	516	95